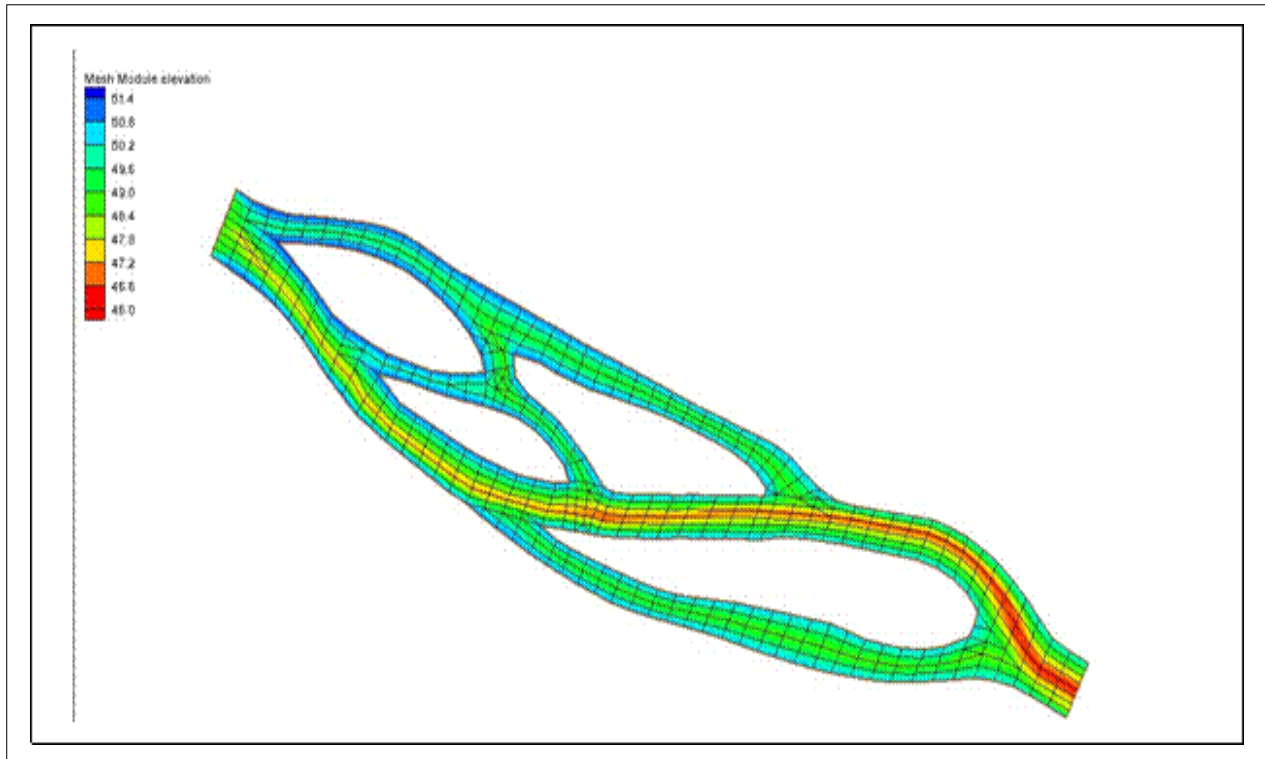


SMS 12.1 Tutorial

Observation



Objectives

This tutorial will give an overview of using the observation coverage in SMS. Observation points will be created to measure the numerical analysis with measured field data and calibration. Observation arcs will be set to view the results of cross sections or river profiles.

Prerequisites

- None

Requirements

- Generic Mesh Model
- Map Module
- Mesh Module

Time

- 30-45 minutes

AQUAVEO™

1	Introduction	2
2	Opening the Data	2
3	Viewing Solution Data	3
4	Creating an Observation Coverage	3
5	The Observation Coverage	4
5.1	Creating a Measurement.....	4
6	Creating an Observation Point	5
6.1	Using the Calibration Target	6
6.2	Multiple Measurements.....	7
7	Reading a Set of Observation Points	8
8	Generating Error Plots	10
8.1	Plot Data.....	10
8.2	Using the Computed vs. Observed Data Plot	11
8.3	Using the Error Summary Plot	11
9	Calibrating the Model	11
9.1	Reading the New Solution.....	12
9.2	Fine-tuning the Model.....	12
10	Using the Error vs. Simulation Plot	13
11	Generating Observation Profile Plots	14
12	Generating Time Series Plots	16
13	Conclusion	18

1 Introduction

An important part of any computer model is the verification of results. Surface water modeling is no exception. Before using a surface water model to predict results, the model must successfully simulate observed behavior. Calibration is the process of altering model input parameters (within an accepted range) until the computed solution matches observed field values (or at least as well as possible). SMS contains a suite of tools in the *Observation Coverage* to assist in the model verification and calibration processes.

The observation coverage consists of *Observation Points* and *Observation Arcs*, which help analyze the solution for a model. Observation points can be used to verify the numerical analysis with measured field data and calibration. They can also be used to see how data changes through time. Observation arcs can be used to view the results for cross sections or river profiles.

This tutorial uses meshes and solutions created with a FESWMS finite element model, but the calibration tools in SMS can be used with any model. It is not necessary to have the FESWMS model enabled to complete this tutorial as the exercises do not require running the model.

2 Opening the Data

To open the simulation and solution data:

1. Select *File / Open...* The *Open* dialog will appear.

2. Browse to the data files folder for this tutorial and select the file “observe1.sms” then click **Open**.
 - If there is still a geometric figure open from a previous tutorial, a prompt will ask if existing data should be deleted. If this happens, click the **Yes** button.

3 Viewing Solution Data

An initial solution has already been created with this data file and was opened with the project. When the solution file is opened into SMS, various scalar and vector datasets are created. By default, the active datasets are the “velocity mag” scalar dataset and the “velocity” vector dataset. Several display options should be changed. To do this:

1. Right-click on the Mesh Data folder in the Project Explorer and select **Display Options...** to open the *Display Options* dialog.
2. Click the **All off** button and then turn on the *Contours*, *Nodestrings* and *Mesh boundary* options.
3. Click **OK** to exit the *Display Options* dialog.

After setting the display options, the mesh data will appear as shown in Figure 1.

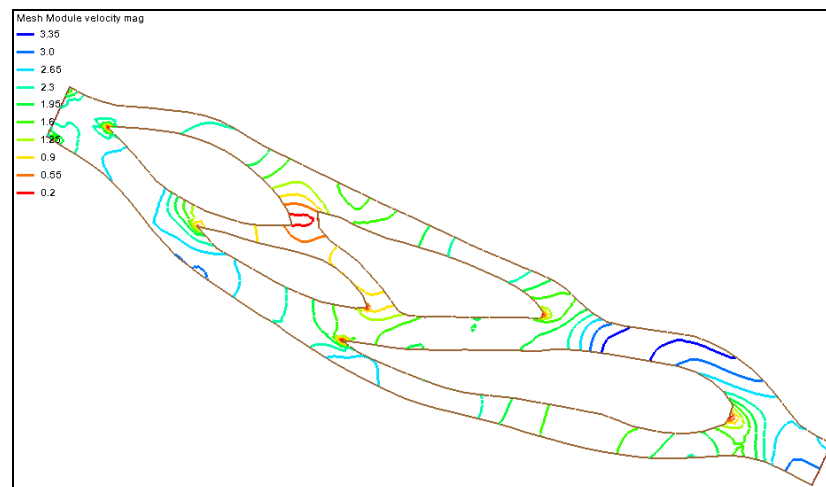


Figure 1 Mesh contained in "observe1.sms"

4 Creating an Observation Coverage

The calibration tools utilize observation features in an observation coverage. To create an observation coverage:

1. Click on the “Area Property” coverage in the Project Explorer to make it the active object. It will most likely be at the bottom of the Project Explorer, under the Map Data heading.

2. Right-click on “Area Property” and select **Rename**. Change the name to “calibration data”.
3. Right-click on the coverage again and select *Type*. Change the type to *Generic | Observation*.

5 The Observation Coverage

The *Observation Coverage* dialog can now be used to specify what data to use in calibrating the model and to edit observation points and arcs.

1. Select *Feature Objects | Attributes...* to bring up the *Observation Coverage* dialog.

In this tutorial, observation points will be used to calibrate the model; however, observation arcs or a combination of arcs and points can be used instead depending on the data collected in the field. Observation arcs work similar to observation points. Differences will be pointed out as the tutorial proceeds.

The *Observation Coverage* dialog can show the attributes for either observation points or observation arcs, but not both at the same time. The *Feature object type* combo box (in the upper right corner) determines which attributes are currently being shown in the *Observation Coverage* dialog.

The upper spreadsheet is called the *Measurements* spreadsheet and the lower spreadsheet is called the *Observation Objects* spreadsheet. The titles of these spreadsheets change depending on what is selected as the feature object. Right now, the title of the *Measurements* spreadsheet is simply “Measurements” and the title of the *Observation Objects* spreadsheet is “Observation Points”.

2. Select “arcs” as the *Feature object type*.

The titles of the *Measurements* and *Observation Objects* spreadsheets will change to “Flux Measurements” and “Observation Arcs,” respectively.

3. Change the *Feature object type* back to “points”.

Before continuing, it should be pointed out that observation points use single values measured in the field such as velocity and water surface elevation to calibrate the model. On the other hand, observation arcs use fluxes that have been computed across the arc to calibrate the model. Therefore, measurements for observation arcs are called “Flux Measurements”.

5.1 Creating a Measurement

By default, when the *Observation Coverage* dialog is first opened, a measurement does not exist. A measurement represents the solution data that is compared to the observed field data in the calibration process. For observation points, a measurement is tied to either a scalar or a vector dataset. This dataset is unique to the measurement and cannot be tied to another measurement. For observation arcs, a measurement is tied to both a

scalar and a vector dataset. Again, this combination of datasets is unique to the measurement.

In addition to a unique *Name* and *Dataset(s)*, two other parameters are used to define the data represented by a measurement: *Trans* and *Module*. When analyzing data that varies through time, select the *Trans* toggle. The *Module* of a measurement refers to the SMS module where the computed data is stored. To create a new measurement:

1. Make sure “points” is selected as the *Feature object type*.
2. Type “Velocity” as the *Name* of the measurement.
3. Select “velocity” as the *Dataset* (not “velocity mag”).

Now that a measurement has been defined, observation points can be created and edited.

6 Creating an Observation Point

Observation points are created at locations in the model where the velocity or water surface elevation has been measured in the field. The measured values will be compared with the values computed by the model to determine the model’s accuracy. In addition to being assigned a *Color* and a *Name*, each observation point is assigned the following data:

- *Location*. The x, y real world location of the point needs to be specified. Observation arcs do not have these location attributes since several points define an arc.
- *Observed value*. The observed value is the value that was measured in the field corresponding to the active measurement.
- *Interval*. The interval is the allowable error (\pm) between the computed value and the observed value. Model verification is achieved when the error is within the interval (\pm) of the observed value.
- *Angle*. When a measurement for observation points is tied to a vector dataset (as is the case with the “Velocity” measurement created in the previous section) an angle needs to be specified. This angle is an azimuth angle with the top of the screen representing north when in plan view.

Name	X [ft]	Y [ft]	Angle	Observed Value [fps]	Interval [fps]
Point 1	190	-369	0.0.	3.5	0.25

Table 1: Observation point values

1. To create an observation point and set the appropriate information, enter the values shown in Table 1 for the X coordinate, Y coordinate, *Observed Value*, and *Interval*. Check the *Observe* box for this point. When the *Observe* box for a point or arc is checked on, it is said to be observed.
2. Click **OK** to close the *Observation Coverage* dialog.


An observation point has now been created at the location specified in the *Observation Coverage* dialog. In this case, the model will be verified if the computed value is ± 0.25 fps of the observed velocity, or between 3.25 and 3.75 fps.

The *Observation Points* spreadsheet will always end with a blank line for the creation of additional points.



Note: there will be no blank line in the *Observation Arcs* spreadsheet since arcs cannot be created while in the *Observation Coverage* dialog.

No angle has been specified for this point. This angle can be specified in the *Observation Coverage* dialog or in the Main Graphics Window.

If the point is not displayed, turn on the display of points:

1. Open the *Display Options* dialog by selecting the **Display Options**  macro.
2. With “Map” highlighted in the list on the left, turn on the checkbox next to *Point*. A point with an arrow pointing up will appear in the Graphics Window. A calibration target is drawn next to the point. Click **OK** to close the *Display Options* dialog.

To specify the angle in the Main Graphics Window:

1. Using the **Zoom**  tool, zoom in on the observation point.
2. Choose the **Select Feature Point**  tool and select the observation point arrow and rotate the point arrow approximately 120° by dragging the end of the arrow clockwise. Do not worry if this angle is not exactly 120° . The arrow just needs to be pointing in the general direction the velocity meter was set up in the field. This is usually in the direction of flow. Figure 2 shows a close-up of “Point 1” with the arrow pointing up (0° angle) and then the position of the arrow at an angle of approximately 120° .

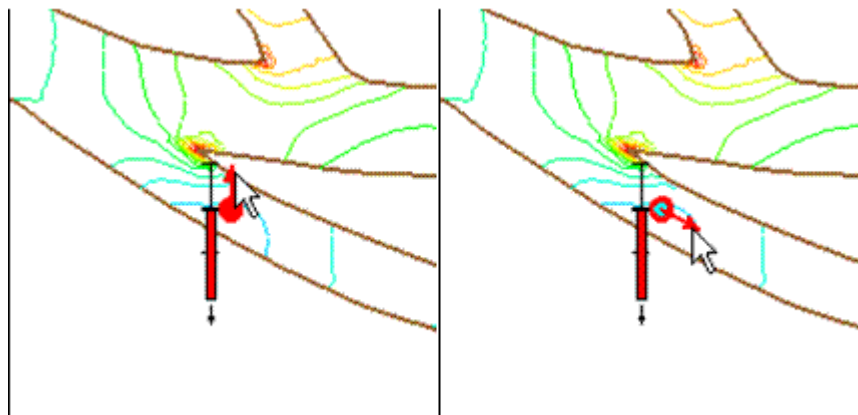


Figure 2 “Point 1” with an arrow angle of 0° and then rotated to 120°

6.1 Using the Calibration Target

A calibration target is drawn next to the observation point. The components of a calibration target are illustrated in Figure 3. These components are:

- *Target Middle*. This is the target value that was measured in the field.
- *Target Extents*. The top of the target represents the target value plus the interval while the bottom represents the target value minus the interval.
- *Color Bar*. The color bar shows the error between the observed value and the computed value. If the bar is entirely within the target, the color bar is drawn in green. If the error is less than twice the interval, the bar is drawn in yellow. A larger error will be drawn in red.

For this example, the bar would be green if the computed value is between 3.25 and 3.75, yellow for values between 3.0–3.25 or 3.75–4.0, and red for values smaller than 3.0 or greater than 4.0.

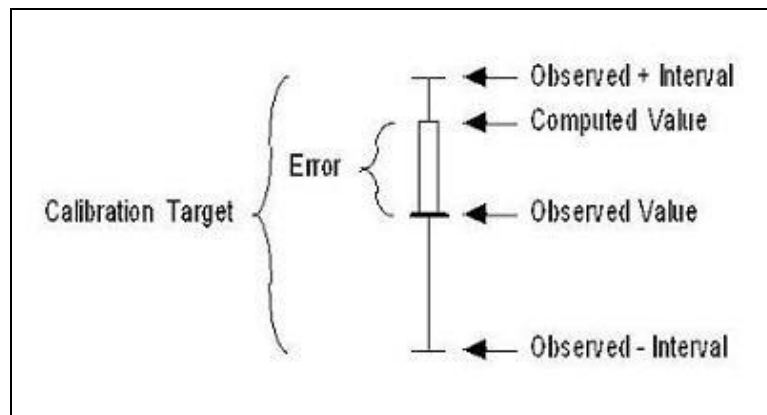



Figure 3 Calibration target

Now that the observation point has been created the target appears. The color bar in this example is red with an arrow pointing down, indicating that the computed solution has a velocity below 3.5 fps.

6.2 Multiple Measurements

Each observation point has attributes for all measurements. Similarly, each observation arc has attributes for each flux measurement. The highlighted measurement in the *Measurements* spreadsheet determines which attributes are shown in the *Observation Objects* spreadsheet.

For example, to create a new measurement:

1. Open the *Observation Coverage* dialog by choosing the **Select Feature Point**  tool from the toolbox and double-clicking “Point 1”.
2. Type “WSE” as the *Name* in the bottom line of the *Measurements* spreadsheet. As with the *Observation Points* spreadsheet, the *Measurements* spreadsheet will always end with a blank line for the creation of additional measurements.
3. Press *Enter* or *Tab* to create the new measurement when finished typing to create the new measurement.

4. Select “water surface” as the *Dataset*.

Note that this new measurement is now the active measurement and it is also highlighted. Several measurements can exist at a time; however, calibration targets will only be displayed in the Main Graphics Window for *Observed* points in the active measurement.

Now look at the *Observation Points* spreadsheet. The *Name*, *Color*, and *X* and *Y* coordinates have remained the same for “Point 1,” however, the *Observed Value* and *Interval* have been reset to their default values. There is no *Angle* column as well since this new measurement is tied to a scalar dataset. These attributes are for the measurement named “WSE”. To view the observation point attributes previously specified for the *Velocity* measurement, click the *Velocity* measurement to highlight it in the *Measurements* spreadsheet.

Do not delete the “WSE” measurement since both it and the “Velocity” measurement will be used to calibrate the model.

5. Before continuing, make sure the “Velocity” measurement is the active measurement by checking the *Active* box in the “Velocity” row.

7 Reading a Set of Observation Points

Using the steps defined above, multiple observation points can be created. However, this process could become tedious for a large set of points. Normally, the data defining the points will be in spreadsheet format and can simply be copied and pasted in the *Observation Points* spreadsheet. To do this:

1. Outside of SMS, open the file “observepts.xls” in a spreadsheet program. (This is a Microsoft Office/Excel file. If using another spreadsheet program, the data is also contained in a tab delimited file named “observepts.txt”.)
2. Highlight the data from the column labeled *Name* to the first column labeled *int* for “Point 2” to “Point 8”. The data for “Point 1” does not need to be copied since “Point 1” has already been created.
3. Copy (*Ctrl + C*) the selected data.
4. Return to SMS and make sure the “Velocity” measurement is selected in the *Observation Coverage* dialog.
5. Select the *Name* of the second row of the *Observation Points* spreadsheet as the starting cell for the data to be pasted and paste (*Ctrl + V*) the copied data into the *Observation Points* spreadsheet.
6. Click the **All On** button to make the points observed.
7. Click **OK** to close the *Observation Coverage* dialog.

Seven new observation points appear in the Graphics Window. The new points are distributed around the finite element mesh, as shown in Figure 4.

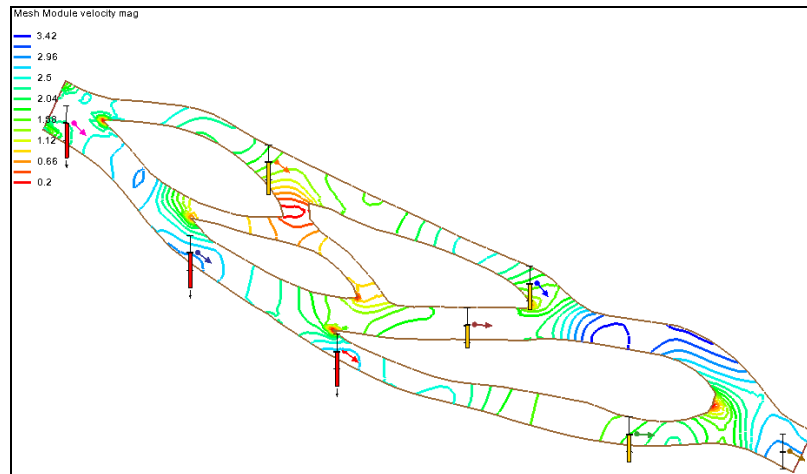



Figure 4 Observation points created from the file “observepts.obt”

Now, the observed values and the confidence interval for the “WSE” measurement need to be specified. To do this:

1. Open the *Observation Coverage* dialog by double-clicking on one of the points using the **Select Feature Point**  tool.
2. Using the same spreadsheet file opened earlier, highlight and copy (*Ctrl + C*) the data from the column labeled *wse* to the second column labeled *int* for “Point 1” to “Point 8”.
3. Return to SMS and make sure the “WSE” measurement is selected (highlighted).
4. Select the *Observed Value* of the top row of the *Observation Points* spreadsheet as the starting cell for the data to be pasted and paste (*Ctrl + V*) the copied data into the *Observation Points* spreadsheet.
5. To view that calibration targets for the “WSE” measurement, make the “WSE” measurement the *Active* measurement and close the *Observation Coverage* dialog by clicking the **OK** button.

The points that appear in the Main Graphics Window do not have arrows since the active measurement is observing a scalar dataset.

When calibrating a model the goal is to calibrate the model so that the computed values from the model fall within the confidence intervals of the observed field data for all measurements. At times this is difficult and personal discretion is required to determine when the model has sufficiently been calibrated.

Before continuing, make the “Velocity” measurement the active measurement by:

1. Double-click any of the points to open the *Observation Coverage* dialog.
2. Check the *Active* box next to the “Velocity” measurement the click **OK**.

8 Generating Error Plots

SMS can create several types of plots to analyze the error between the computed and observed values. To create a *Computed vs. Observed Data* plot and an *Error Summary* plot

1. Select *Display / Plot Wizard...* to bring up the *Plot Wizard*.
2. Choose “Computed vs. Observed Data” as the *Plot Type* in step 1 then click **Next**.
3. In step 2, choose “Velocity” as the *Measurement* then click **Finish** to close the *Plot Wizard* and generate the plot.
4. Create another plot of the “Velocity” measurement by repeating steps 1–3 above, but this time choose “Error Summary” as the *Plot Type* in step 2. Again choose “Velocity” as the *Measurement*.

Both plots have now been created. Each plot exists in a separate window that can be resized, moved, and closed at any time. The plots that appear are shown in Figure 5.

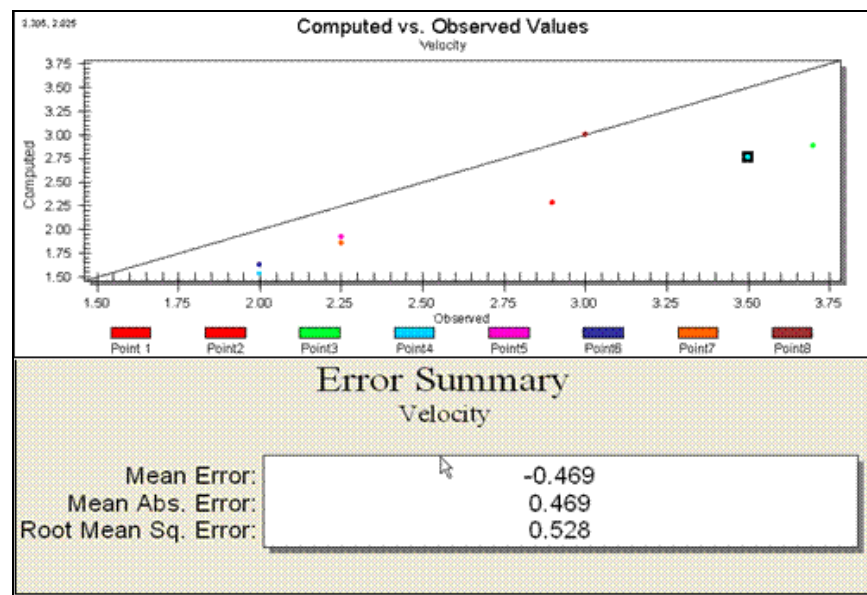


Figure 5 Computed vs. Observed Data and Error Summary plots

8.1 Plot Data

More plots can also be created for the “WSE” measurement or the current plots can be edited. To edit a plot:

1. Right-click the *Error Summary* plot and select **Plot Data...** from the menu. This will bring up the *Data Options* dialog which is identical to Step 2 of the *Plot Wizard*.
2. Select “WSE” as the *Measurement* then click **OK** to close the *Data Options* dialog.

The *Error Summary* plot is now updated using the data from the “WSE” measurement.

8.2 Using the Computed vs. Observed Data Plot

In the *Computed vs. Observed Data* plot, a symbol is drawn for each of the observation points. A point that plots on or near the diagonal line indicates a low error. Points far from the diagonal have a larger error. The position of the points relative to the line gives an indication whether the computed values are consistently higher or lower than the observed values. In this case, all points are below the line indicating that all computed velocities are lower than observed values.

1. Change the measurement for the *Computed vs. Observed Data* plot to the “WSE” measurement by following the steps above defined in section 8.1.




Now, all points plot above the line indicating that all computed water surface elevations are above the observed values.

8.3 Using the Error Summary Plot

In the *Error Summary* plot, the following three types of error norms are reported:

- *Mean Error*. This is the average error for the points. This value can be misleading since positive and negative errors can cancel.
- *Mean Absolute Error*. This is the mean of the absolute values of the errors. It is a true mean, not allowing positive and negative errors to cancel.
- *Root Mean Square*. This takes the sum of the square of the errors and then takes its square root. This norm tends to give more weight to cases where a few extreme error values exist.

Before continuing, do the following:

1. Close the two plots now by clicking on the  at the upper right corner of the window.
2. Then, maximize  the graphics window and frame the image, using the **Frame**  macro.

9 Calibrating the Model

The values in this solution for both measurements are not within the calibration targets. To achieve better calibration, the material properties can be changed and then the model can be re-run.

Since the errors through the main channel for the “Velocity” measurement are negative, indicating that the observed velocities are larger than those computed by the model, it’s necessary to change the parameters in such a way as to increase the velocity in these locations (eddy viscosity and/or Manning’s n). Increasing the velocity at these locations should also decrease the water surface elevation.

To save time, solutions have been provided. In each solution the eddy viscosity parameter was changed before the model run. The eddy viscosity values used were 10.0 (observe1), 1.5 (observe2), 6.0 (observe3), and 7.0 (observe4).

9.1 Reading the New Solution

In the first attempt to calibrate the model, the eddy viscosity was set to 1.5 and then the model was run. To view the solution for the second simulation, do the following:

1. Use the *File* / **Open...** command to bring up the Open browser.
2. Select the file “observe2.h5” and click **Open**. Solutions for both the *observe1* model and the *observe2* model should be visible.

The calibration targets will automatically update to show the errors for the solution that was just opened.

The verification targets now show that six points for the “Velocity” measurement are within the allowable range and two points are above the range, but still in the yellow range. There are no points more than the two times the variation above the observed value (red targets). Looking at targets for the “WSE” measurement, four points are within the allowable range and four are below the range with one point being more than two times the variation below the observed value. Since the values for the “Velocity” measurement that are unacceptable are now higher than the observed values and the values for the “WSE” measurement that are unacceptable are now lower than the observed values, the correction made was too drastic. Specifically, the eddy viscosity was lowered too much and it needs to be raised.

9.2 Fine-tuning the Model

Since the eddy viscosity was too low on the second model run, a third model run was completed using an eddy viscosity of 6.0. To view this solution:

1. Repeat steps 1 and 3 in section 9.1, but open the file “observe3.h5”.

After this third simulation is opened, all the observation point targets for the “Velocity” measurement should be within the acceptable intervals. Make sure velocity is the active measurement and confirm this.

Now make the “WSE” measurement the *Active* measurement (in the *Observation Coverage* dialog accessed through the *Feature Objects* menu in the *Map* module). All but two points are within the acceptable interval.

To get these two points within range, a final model run was completed using an eddy viscosity of 7.0. To view this solution:

1. Repeat steps 1 and 3 in section 9.1, but open the file “observe4.h5”.

Looking at the calibration targets should show all the points are acceptable. The calibration process is now complete. It will not always be possible to get all observation points for each measurement to be within the acceptable confidence interval. Therefore, it will have to be decided which measurements and which points are the most important to have within the acceptable range.

10 Using the Error vs. Simulation Plot

When performing trial-and-error verification, it is often important to keep track of the error trend as new solutions are repeatedly computed. SMS provides a special verification plot to simplify this task. To create this plot:

1. Select *Display / Plot Wizard...* To bring up the *Plot Wizard*.
2. Choose “Error vs. Simulation” as the *Plot Type* and click **Next**.
3. Select “Velocity” as the *Measurement*.

SMS will create a plot with one point for each simulation. The order of the points in the plot will follow the order solution sets in the *Solutions* list box. The solution at the top will be first.

4. Use the **Move Up** and **Move Down** buttons to change this order. The default order is the order that they were read in.
5. Click **Finish** to close the *Plot Wizard* and generate the plot.

A new plot appears showing the *Error vs. Simulation*, as shown in Figure 6. Notice for the “Velocity” measurement that the errors decrease as each simulation was performed until the final solution where the errors slightly increase. This slight increase in error with the “Velocity” measurement was required to get that last observation point for the “WSE” measurement within the acceptable range. Generally, if the errors increase, then the model is not improving.

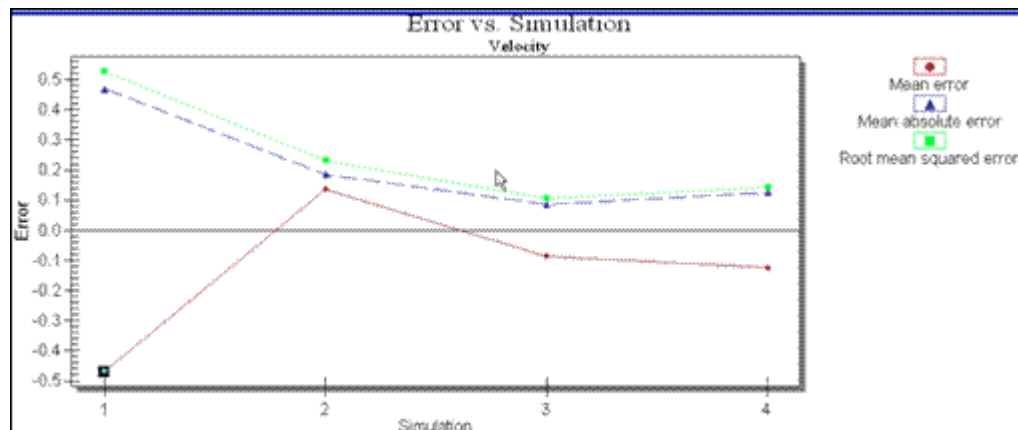


Figure 6 Error vs. Simulation plot for Velocity

View the *Error vs. Simulation* plot using the “WSE” measurement.

1. Right-click the *Error vs. Simulation* plot and select **Plot Data...** to bring up the *Data Options* dialog.
2. Select “WSE” as the *Measurement* then click **OK** to close the *Data Options* dialog.

The errors for this measurement changed dramatically from solution to solution since parameters were first changed to calibrate points for the “Velocity” measurement. However, the general trend was a decrease in error. This plot is shown in Figure 7.

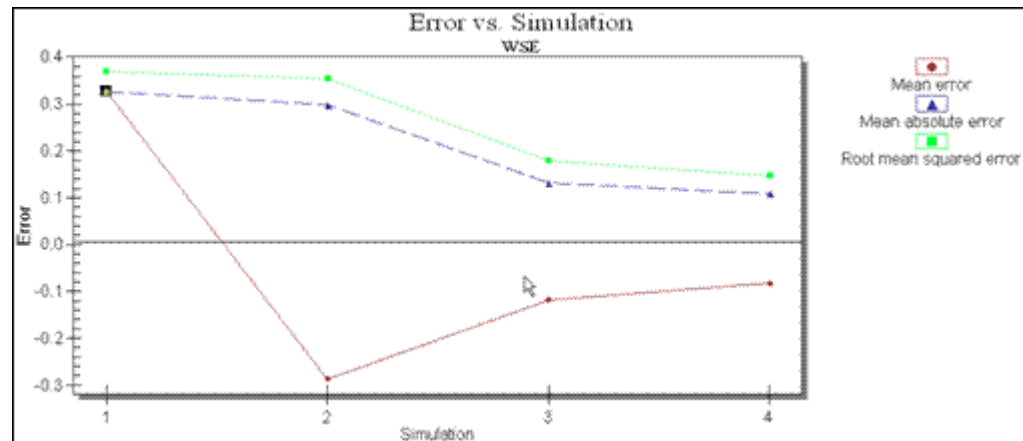


Figure 7 Error vs. Simulation plot for WSE

Close the plot now by clicking on the  at the upper right corner of the window.

11 Generating Observation Profile Plots


Observation profile plots are used to view dataset values along observation arcs. The first observation arc to be created will be used to create a profile of the main channel. To create this arc:

1. Right-click on the Map Data folder in the Project Explorer select **New Coverage** to bring up the *New Coverage* dialog
2. Select “Observation” for the *Type* and enter “Profiles” as the *Coverage Name*, then click **OK** to close the dialog.
3. Click on this new coverage to make the Map module active.

It's useful to create a separate coverage to keep the observation arcs separate from the existing observation points. When an observation arc is being created, observation points may be clicked joining them to the arc. Observation points and arcs can exist on the same coverage.


4. Choose the **Create Feature Arc**  tool.
5. Create an arc down the main channel, as shown in Figure 8. Remember to double-click the last point to end the arc.

When the plots are drawn, they will use the name and color associated with the observation arc. To change the name and color of the arc:

6. Choose the **Select Feature Arcs**  tool.
7. Double-click on the profile arc to bring up the *Observation Coverage* dialog.

8. Change the *Name* of the arc to “river profile” in the *Observation Arcs* section (leave its *Color* as the default).
9. Click **OK** to close the *Observation Coverage* dialog.

Three more arcs need to be created, each across a section of the river. These arcs will be used to create cross section plots. To create these arcs:

10. Select the **Create Feature Arcs**  tool.
11. Create each of the cross section arcs, as shown in Figure 8.

Note: When creating the cross section arcs, do not click on the profile arc, as this would split both the profile arc and the cross section arc.

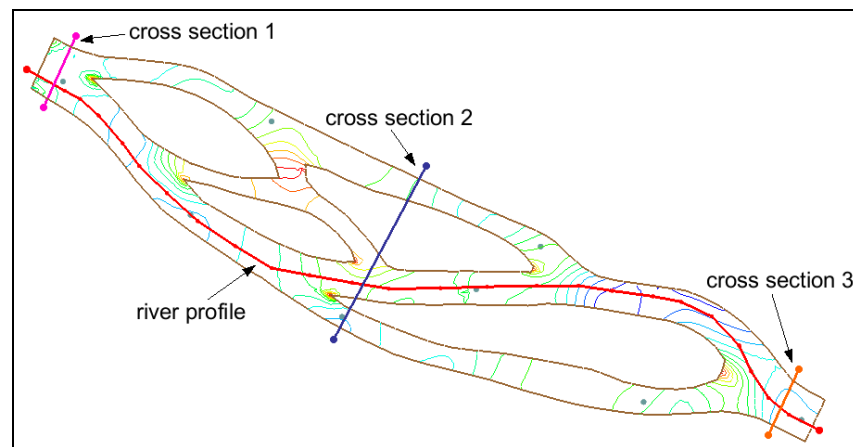



Figure 8 Profile and cross section arcs

12. With the cross sections created, open the *Observation Coverage* dialog by double-clicking on one of the arcs.
13. Assign a unique color and an appropriate name to the cross section arc.
14. When finished, click **OK** to close the *Observation Coverage* dialog.
15. Repeat steps 12–14 for the other two arcs.


With the arcs created, the plots can now be generated. To do this:

16. Select *Display / Plot Wizard...*  to bring up the *Plot Wizard*.
17. Choose “Observation Profile” as the *Plot Type* and click **Next**.
18. Turn on the *Specified* option in the *Dataset(s)* section then check only the “water surface” dataset in the *observe4.flo* solution and the “elevation” dataset.
19. Turn off the three cross section arcs in the *Arcs* spreadsheet by turning off their corresponding *Show* toggles.
20. Click **Finish** to close the *Plot Wizard* and generate the plot.

The profile plot of the geometry of the stream should appear as shown in Figure 9.

To view the velocity distribution across the three cross sections:

21. Right-click on the profile plot and select **Data Options** to bring up the *Data Options* dialog.
22. Turn on the “velocity mag” dataset in the *observe4.flo* solution, and *Show* only the three cross section arcs. Click **Ok** to close the *Data Options* dialog.

View the cross section profile plot. When done, close  the profile plot.

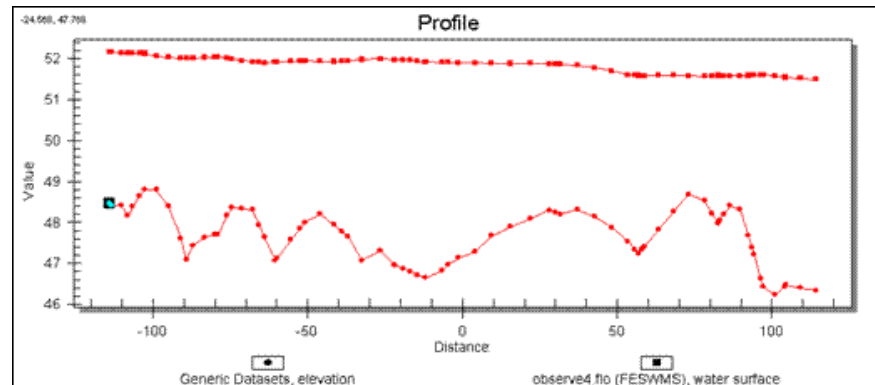


Figure 9 Observation Profile plot

12 Generating Time Series Plots

As mentioned earlier, observation arcs are used to compute fluxes. One flux value that is often observed and measured in the field is flow rate. Observed flow rates can be used in model calibration in the same way observed velocities and water surface elevations are used. In addition to normal model calibration, time series plots can be generated showing how the flow rate flux changes with time. This type of time series plot is commonly known as a hydrograph. Hydrographs created using calculated data from the model are useful to see if the model properly predicts flow rate patterns. To create a time series plot:

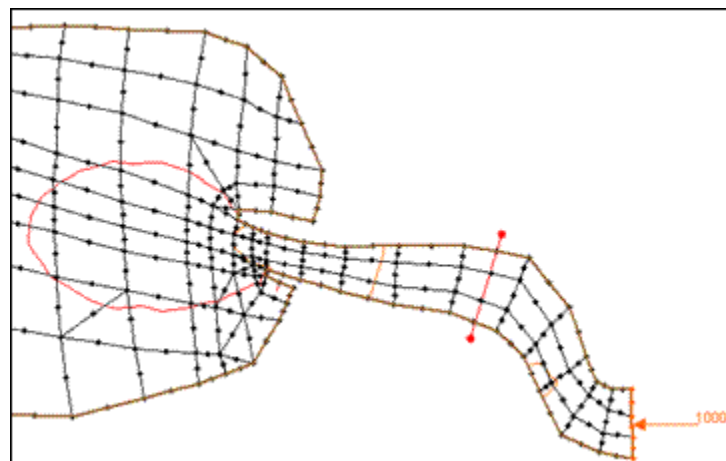




Figure 10 Observation arc across "noyo1.sms" mesh

1. Select *File / Open...* to bring up the *Open* dialog.

2. Select the file “noy01.sms” and click **Open**.
 - If geometry data is still open, a warning will appear that the existing mesh will be deleted. If this happens, click **Yes** to the prompt.
3. Right-click on Map Data in the Project Explorer and select **New Coverage** from the menu. This will open the *New Coverage* dialog.
4. Select “observation” for the *Coverage Type* and enter “Fluxes” as the *Coverage Name*. Click **OK** to create the new coverage.
5. Click on the **Frame**  button.
6. Go to *Display / Display Options* to bring up the *Display Options* dialog.
7. With *2D Mesh* highlighted, turn on the *Elements* and *Nodes* options then click **OK**.
8. With the “Fluxes” coverage active, create an observation arc across the mesh as shown in Figure 10, using the **Create Feature Arc** tool.
9. Open the *Plot Wizard*, by selecting *Display / Plot Wizard* or clicking the **Plot Wizard**  macro button.
10. In step 1 of the wizard, choose “Time Series” as the *Plot Type* and click **Next** to move to the next step.
11. Change the *Function Type* to “Flux”. Check the *Show* box in the spreadsheet for the arc that was just created (the default name will be “Arc 1”). Select “water depth” as the *Scalar Dataset* and “velocity” as the *Vector Dataset*.
12. Click **Finish** to close the *Plot Wizard* and generate the plot.

A new window opens with the *Time Series* plot of the flow rate flux measurement. This plot should appear similar to the one in Figure 11.

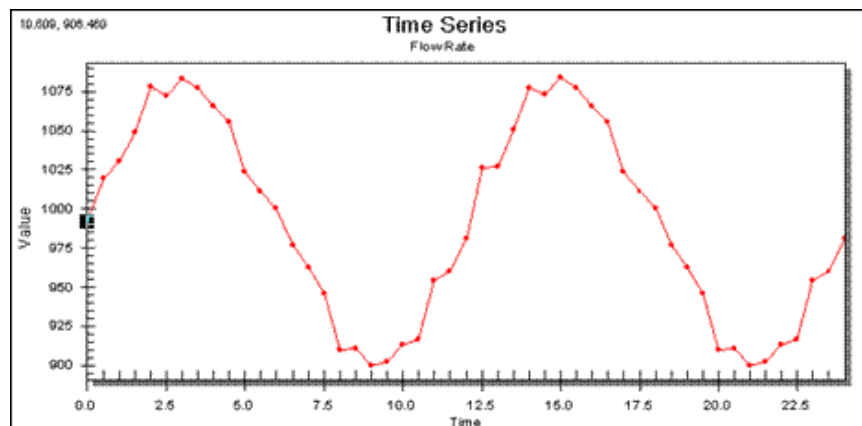


Figure 11 Time Series plot of flow rate

13 Conclusion

This concludes the “Observation Coverage” tutorial. Continue to experiment with the program or exit SMS.